



MISSION STATEMENT: “One World Heart’s mission is to lift humanity up “onhi” and our planet Earth (Gaia) through education and promotion of the new Aquarian Spirituality, according to the Creator’s Will and Plan.”

Relationships (re-lationships): Connections that allow one to evolve, intensify, commune through love and experience towards an eventual unity consciousness.

On Honor

“In recognition of the Divine Self of the One Absolute, there is exaltation to the Truth. In our actualizations, esteem and consideration for the other is an underlying principle. Then, through Realization of Being and Manifestation of Doing, there is an acknowledgement of the nature of such, the outcome of which defines an appropriateness of behavior towards another’s needs, which, when governed by the greatest sensitivity, is always a mutual giving and receiving of Divine Love.”

Lady Master Nada

The Crown

The highest level of human achievement is direct contact with the Divine. Jewish mysticism calls it, “The Crown.” This may occur through merits of hard spiritual work or through Grace from the Heavens. Why do we seek direct communion? Is it for self-empowerment or as a redemptive act designed to free one from personal weakness and limitation? Are we simply trying to achieve our brief fifteen minutes of fame? Does a deeper meaning to this quest exist?

Ancient Wisdom reveals the true purpose and is accurate today as it was thousands and thousands of years ago. The entire purpose of the self-unification with God is to aid in bringing manifested existence closer to its full realizations according to Divine Intention. We yearn for that intimate partnership which allows us some small measure of direct co-creation and personal participation with Divine Will. This is surely the pinnacle of our experience; it is the crowning achievement for any human

lifetime. Our will blended into unity with Divine Will, hearing the “word” penetrating deep into our beings, and striving to achieve that special intense receptivity to absorb more knowing of the spiritual realms.

Today, I am thinking of the Emanuella and how fortunate we are to have direct contact with one who has achieved this crowning victory. She has heard the word of God since age six! The revelations pour forth from her like a flowing river! Imagine what it must be like to live an entire lifetime having a personal relationship with our Creator and never have I seen anyone work harder than this Being. Those of us who walk closely by her side are greatly blessed for in Emanuella we see hope made manifest that somewhere in time we too may hear the “word” and enter into intimate partnership with the Divine. Always we see the necessary qualities appear time and time again in those who succeed, for it is one who is courageous and loving, wise and receptive, determined yet flexible, humble and steadfast. And this describes our Emanuella. This is the ultimate relationship for how can there be anything greater than personal Divine

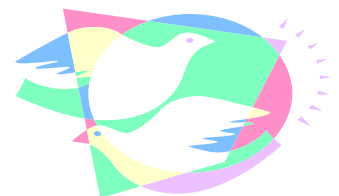


DONATIONS ACCEPTED

Communion?

We are extraordinarily blessed and honored to witness first hand this beautiful miracle of transcendence. Yes, Beloved Ones, this is still possible to attain even in our “Modern World.” As I continue to walk by her side in the Blue Flame of Power, I am overjoyed to be called forth once more into form to testify to God’s Will In Action, to be a witness of the Emanuella’s Illumination, and to invoke the light within your spirit to stand as an example of enlightened loving will manifested before all!

El Morya



IN THIS ISSUE:

The Crown	1
The Kaleidoscope of Human Relationships	2-3
Relational Expansion	3

**THE KALEIDOSCOPE OF
HUMAN RELATIONS**

**TO KIDS DUBBED DIFFERENT
NOT IN ALIGNMENT OR
AGREEMENT.
AT SCHOOL NOT TOP OF THE
CLASS
ALONE, NOT PART OF THE MASS.
NOT UNDERSTOOD
ACHIEVED THE BEST THEY
COULD.
UNACCUSTOMED TO
ACCOLADES OR CHEERS
YET MUCH MORE THAN WHAT
APPEARS.**

**TO KIDS DUBBED DIFFERENT
NOT IN ALIGNMENT OR
AGREEMENT.
CRAZY OR DUMB
WHO DANCE TO A DISTINCT
DRUM.**

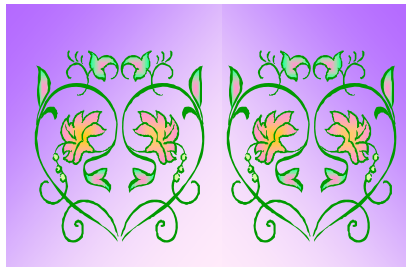
**KNOW RIGHT FROM WRONG
IN TUNE WITH A DESIRABLE
SONG.
WHO DON'T FIT
YET WITH GUTS AND GRIT.**

**TO KIDS DUBBED DIFFERENT
NOT IN ALIGNMENT OR
AGREEMENT.
WITH A MISCHIEVOUS STREAK
WHOSE FUTURE APPEARS
BLEAK.**

**A COMPLIANT DISPOSITION
YET A SILENT AMBITION.
YOUR OWN TECHNIQUE
YOU ARE UNIQUE.**

**TO KIDS DUBBED DIFFERENT
NOT IN ALIGNMENT OR
AGREEMENT
HISTORY HAS SHOWN
WHEN YOU HAVE GROWN
MUCH MORE WAS GOT
IN CREATING YOUR PLOT.
YOUR DIFFERENCE – A
WONDERFUL FEAT,
HOW UPBEAT!**

“In a state of All Knowing, there is recognition of the Divine Essence of one to the other, an acknowledgement of the unique Self, and an expression of honor and reverence for each sacred space. The Manifestation of such in form energy is subject to specificity of Being and Actualization of Doing, through an exemplification of morality, an integration of honesty and integrity, and commitment to consistency. The Realization then, of dignity, is consequential, which, when governed by Understanding and Open Communication, is a catalyst for a state of Allowing, so that concerns are inclusive, roles are definitive and diversity is valued. Through an exchange of knowledge henceforth, the benefit to the one and the whole is implied and explicit.”



**EVERYBODY IS A SOMEBODY WHILE
NOBODY IS JUST AN ANYBODY!**

In recognizing distinct differences as well as diversity in the other, we acknowledge the Divinity and dignity of another, and give honor and respect to this. “Do Unto Others as You Would Have Them Do unto You” is a guiding principle in reciprocal behavior of the heart, in which honor, respect, trust, and communication, is an interdependent, integrative form of cause and effect. This is a pre-requisite to a greater understanding of the Divine Godly Self in all, so that through growth, we can expand outwards to-

wards another that which is within, and thereby engage in meaningful relationships. Herein lies our greatest challenge: how to relate well to ourselves, and then to all, the one and the whole, from inner to outer, and also, how to assimilate, integrate, and unify these new behavior patterns so that they become an enlightened expression.

This desire for transition must be recognized before guidelines can be implemented, and one can be consistently proactive in reconstructing the new. There must be a shift in consciousness and an acceptance that change is required. Within this parameter, there is an understanding and realization of the principle, “Honor Thy Father and Thy Mother,” for in honoring the Alpha and Omega makeup of Divine, we acknowledge the male and female energies present in each one of us, give reverence to our own dynamic and nurturing qualities, and pay homage to the intent of our make-up. As we come into union with Divine Wholeness, we expand this towards another, regardless of race, religion or status. Through an experience of the Holiness of the Creator, as well as the Divine Holy Light, and in a state of humility, we recognize our own Divine qualities, that of another, and then render them equally holy. In “Loving Your Neighbor **Who IS** As Yourself,” there is cognizance of the truth of **wholeness**: a condition of Oneness, without separation, or cause for difference, where, through inclusiveness, each one **IS**: indivisible with each other, and indivisible with God. As we move into a state of appreciation, consideration, and esteem,

we acknowledge the defining dictum of the creative process: 'sameness' stunts growth. In exercising this wisdom, the Holiness of God is manifested. Our subsequent behavior is Love; honesty and integrity is explicit, morality is promoted, and harmony is all pervasive. As a creative force, we have every opportunity, through all of our experiences, and in the process of our relations with ourselves and with one another, to express and maximize this Divinity, without distinctions or judgments, and to expand our innate uniqueness, throughout our being and doing. Through non-exploitation of ourselves and others, with boundaries in place, our weaknesses then become our strength, and as we are liberated and non-controlling, we allow another to be, and in so doing, we too, become.

As a presumption then of everyone's holiness, we must strive to present each person's greatest gift, produce each person's blessing, and honor each person's truth. Only then are we a living, breathing example of the Highest Truth that resides within: speak boldly that all might know of Love; speak openly for there is nothing to hide; speak candidly so we cannot be mistaken; speak often so our truth can go forth; speak respectfully so that no one is dishonored, and speak lovingly to heal. Within this paradigm lies our greatest contribution. Let all go forth and begin this process!

Lady Nada



Relational Expansion Part 1

Being in relationship is a divine blessing.

It is an opportunity to express one's self to others in many different variations and manners.

The intensity of each relationship is in direct proportion to the energy released, within and between the interactions of the participants.

How one thinks, creates energy and these vibrations set into motion their energizing impact onto the intended recipient(s).

The emotions connected to thoughts have the potential to move us (Emotion) from one place to another.

As energetic beings, we have felt these encounters in the form of emotions and sensations of love, Hate, Fear, Compassion, Control, and much more.

Relationships are our way to grow and expand into the True Souls that we are.

However, many shy away or hide from the exposure, for the trauma of living an authentic life is far more frightening than being isolated and remaining distant from the sensations and excitement of partnering in a relationship of equal sharing and caring.

At times, there is such a lack of life force in many individuals that they prey upon those who exhibit vitality. They can also develop resentment, which threatens to consume the very essence of the once living thriving being.

To live without life affirming energy is to aimlessly walk on the peripheral boundaries (fringes) of existence.

The solution is to learn the art of rela-

tionship building and maintenance of an ever changing wave of growth through and in **Relational Expansion**, which provides the gifts and affords all the opportunities that living offers.

What is required to begin the process, in which the principles of relational expansion is achieved, begins with a desire and commitment to practice a new lifestyle, and then to accept the changes, without doubt or resentment or longing of past practices.

It is necessary to grow past one's self, for unless we can see the culmination of self perpetuation, our perception does not expand. It is imperative that the self be unified with the soul, so that the dynamics of the attributes of the embodied self can be guided by the soul's wisdom, thus a **relational expansion** is first achieved, in a fully integrated platform where quality, value, and principle become the foundation of the enlightened life.

Hilarion

You should not say, "God is in my Heart," but rather, "I am in the Heart of God."

Kahlil Gibran

**NEXT ISSUE
"Healing"**

Onhi Newsletter Staff



Publisher – One World Heart Institute
 Production Manager – Mark Kochkodan
 Chief Editor – Phyllis Abratt
 Consultant Editor – Joseph Miller
 Graphic Designer - David Tourin
 Graphic Designer – Roxana Camacho
 Graphic Designer – Donna Zuckerman

Authors

Linda Michael, Avatara Emanuella
 Mark Kochkodan, life extension of Lord Lanto
 Jannine Leist, life extension of El Morya
 Joseph Miller, life extension of Master Kuthumi
 David Tourin, life extension of Djwhal Khul
 Ellen Amchin, life extension of Master Hilarion
 Donna Zuckerman, life extension of Lady Ina
 Phyllis Abratt, life extension of Lady Nada
 Roxana Camacho, life extension of St. Bernard

Illumination Flame

Illumination Flame is a free publication and financially supported by our sponsors and advertisers. It is available on our website www.onhi.org and at selected healing and education centers. The opinion expressed by the authors and sponsors of *Illumination Flame* are not necessarily those of the Publisher. *Illumination Flame* and those in its employ are not responsible for situations arising from the application or participation in anything said or advertised in this publication. Articles appearing in this publication may not be reproduced in whole or part without express permission from the Publisher. We welcome your ideas, articles and feedback. To contact *Illumination Flame* write or call us at:

Illumination Flame
 One World Heart Institute
 4613 N. University Drive, No. 469
 Coral Springs, Florida 33067
 Phone: 954.559.1296 FAX: 954.796.1765
 Email: info@onhi.org

Sponsors



Rev. Patricia Ariel Land

Healing Ministries of Mt. Shasta

530.926.4323

Patricialandariel.bizland.com
Patricialandariel@hotmail.com

“Divine Love, the Way Home”



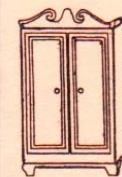
EVERGREEN SPICES, INC.

SPICES FROM ALL
 OVER THE WORLD



2900 Sample Rd.
 Pompano Beach, FL MS029
 33073-3026

954-978-2981
 305-632-3056



ANDEAN

RUSTIC FURNITURE - POTTERY
 IRON WORKS & ACCESSORIES



CARLOS HERRERA

DELRAY BEACH
 2613 N. FEDERAL HWY
 561.279.1279 - 561.317.1801

BOYNTON BEACH
 8543 W. BOYNTON BEACH BLVD.
 561.424.0615

EMAIL: CAHERRERA13@JUNO.COM

Call or email us for
 advertising or sponsor rates.